

Indicator Switches / Dual Heat Sensor Diagram

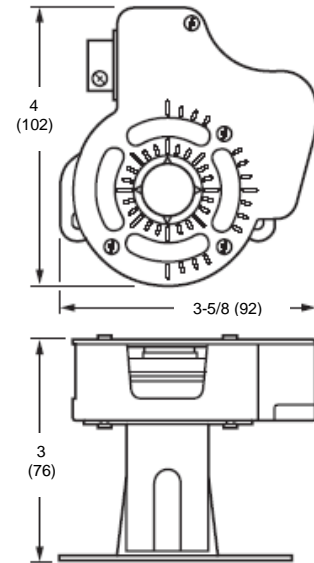
Features – Dual switch and heat sensor electrical diagram maybe used on all fire and smoke damper products manufactured by Safe-Air/Dowco, Smoke dampers will use the dual indicator switch only. Fire and smoke dampers are reopenable.

Open position – the damper opens and will remain in the open position until the sensor sends a signal for the damper to close and lock.

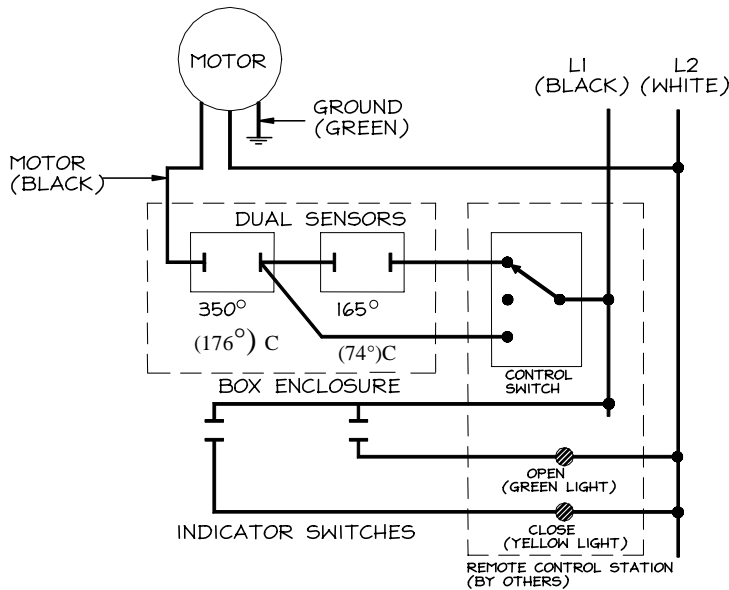
Closed position – the damper closes and will remain in the closed position until the sensor is reset.

Normal position – the damper will remain in the open position until closed by elevated temperatures in excess of 160° F (71°)C , 240° F (115°)C or 350° F (176°)C.

Ratings and Approvals:
Underwriters Laboratories Inc. Recognized:
File No. E4436



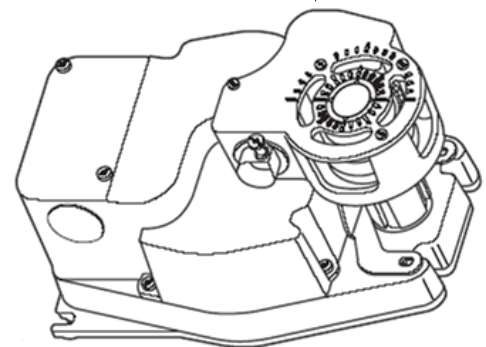
Rating
UL/CSA rated 300V, 90°C, 18 gauge, NEMA2



WIRING DIAGRAM FOR DUAL SENSORS AND INDICATOR SWITCHES

Model IDS250

Available as a option on all pneumatic and electronic actuators supplied by Safe-Air



DATE	ARCHITECT / ENGINEER			CUSTOMER
PROJECT				
ITEM	QTY	W	H	DESCRIPTION